



5.8 How to Create a Voice Scenario Survey

Bright Pattern Documentation

Generated: 8/09/2022 8:28 am

Content is available under license unless otherwise noted.

Table of Contents

Table of Contents	2
Scenario Builder Overview	3
Scenario Engine	3
Graphical User Interface	4
Scenario Blocks	4
Conditional Exits	4
Prompts	4
Settings	4
Scenario Builder Overview	5
Scenario Engine	6
Graphical User Interface	6
Scenario Blocks	6
Conditional Exits	6
Prompts	7
Settings	7

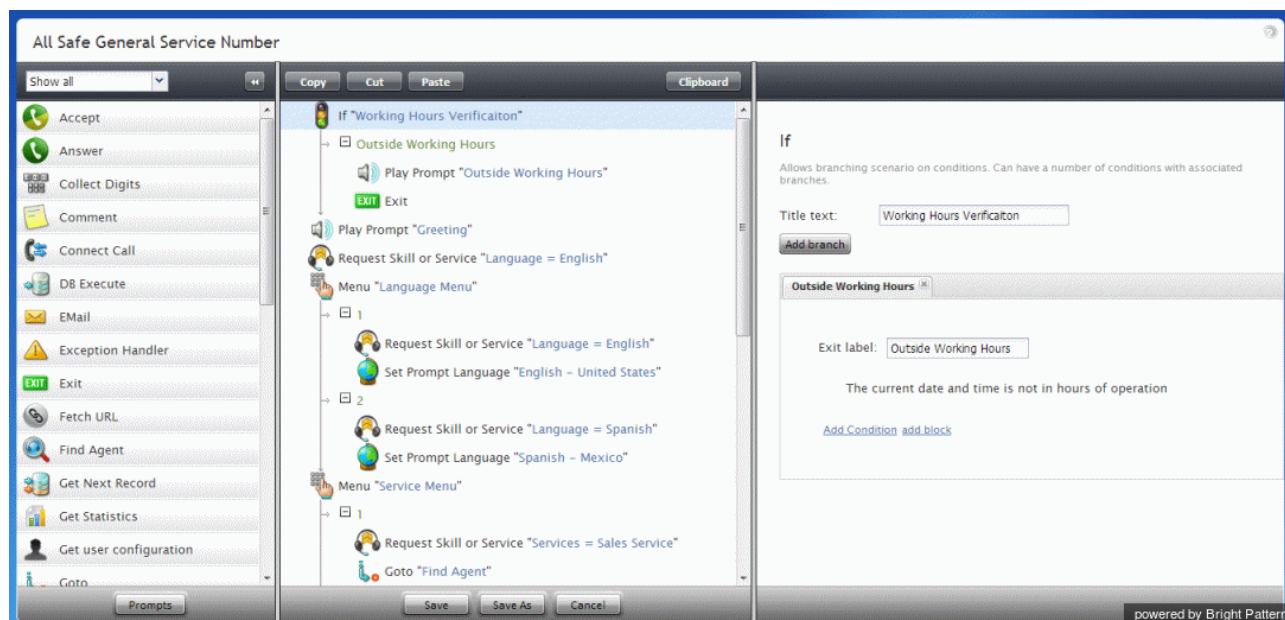
1. REDIRECT [5.3:Contact-center-administrator-guide/Scenarios/Voice](#)

1. REDIRECT [5.3:Contact-center-administrator-guide/Scenarios/ScenariosOverview](#)

Scenario Builder Overview

For every customer interaction that enters your contact center, Bright Pattern Contact Center software has to process that specific interaction to determine what to do with it (e.g., what prompts or announcements to apply, what resources to queue for, what music to play, or when to over-flow to alternate resources). The logic of such automated interaction processing is defined in a *scenario*. Execution of a scenario with respect to a specific interaction is triggered by a particular event, such as the arrival of a call at a specific access number, or the initiation of a chat session from a specific web page.

Scenarios are designed and edited in the Scenario Builder application. This application is launched from the Contact Center Administrator application when you add a new scenario or select an existing one for editing. For more information, see section [Scenarios Overview](#) of the Bright Pattern *Contact Center Administrator Guide*.



Scenario Builder

Scenario Engine

The Scenario Engine is the component of Bright Pattern Contact Center software that executes your scenarios. Starting from version 5.0, should scenario failover occur (i.e., the Scenario Engine fails while processing a [Voice](#) scenario), the scenario will be transferred to a backup Scenario Engine; this will restart the scenario from the last executed block and prevent active, connected calls from being disconnected.

The following are some examples of what can occur at various stages of scenario failover:

- If scenario was on [Interactive Voice Response \(IVR\)](#) stage, the current IVR block will run again. For example, if a scenario is on the [Collect Digits](#) block, all entered digits will be lost and the greeting prompt will be played

again. If the same scenario has a second call leg (is on the [Connect Call](#) block), the second leg is immediately disconnected and the Connect Call block again starts to dial to the destination.

- If a scenario failover occurs, calls waiting in the queue (i.e., the [Find Agent](#) block) will be immediately queued again by new Scenario Engine using the skill requirements collected by original scenario.
- Pending scenario blocks (i.e., ringing, dialing, transfers in progress) may be lost.

Note: Real-time statistics are incrementally affected by scenario failovers in some instances. For example, for [queued calls](#), one inbound call will increase statistic value by two (e.g., the first time when it was queued by original Scenario Engine, the second time when it was switched over to new Scenario Engine).

Graphical User Interface

Scenario Builder incorporates a graphical user interface (GUI) with which you can visually connect a sequence of functional blocks, thus building your scenario. These blocks are known as *scenario blocks*. Scenarios are created using a flowchart format that represents the sequence of interaction processing steps in the scenario. Different scenario blocks perform different functions, such as playing prompts, collecting digits, or looking for available agents.

To add a block to the scenario, select it from the list on the left and drag it to the desired location within the scenario. To remove a block from a scenario, select the block within the scenario and drag it back to the list of blocks on the left.

Scenario Blocks

Each block has its own configuration attributes, which appear in the edit pane on the right when the block is added to the flowchart or selected within the flowchart. The attributes specify the function represented by the block. For example, the *Play Prompt* block has an attribute that specifies which prompt shall be played when this block is executed in a specific processing step of a specific scenario. The scenario blocks described in this guide may have configuration attributes related to conditional exits, prompts, and/or settings.

Conditional Exits

The scenario typically processes blocks sequentially; however, some blocks have multiple paths that the scenario can take after processing the block. These paths are called conditional exits. Conditional exits enable you to determine how the voice scenario responds to certain conditions that may occur during the processing of an interaction, such as an agent not responding to a call. Each conditional exit appears in the flowchart as green text beneath the block to which it applies. A conditional exit may contain a flow of blocks to handle specific situations.

Prompts

Many blocks use voice prompts to request input from callers, inform callers about events, or play music while callers are waiting for an agent. These prompts can be either prerecorded audio files or static prompts that the system generates using Text-to-Speech (TTS) functionality from textual prompt descriptions. The Prompt Manager dialog box in Scenario Builder lists all prompts the open voice scenario uses, and it lets you set the languages in which the voice scenario can play prompts.

Settings

Settings, also known as configuration attributes, for this block appear in the edit pane on the right when the block is added to the flowchart or selected within the flowchart. These settings specify the function represented by the block.

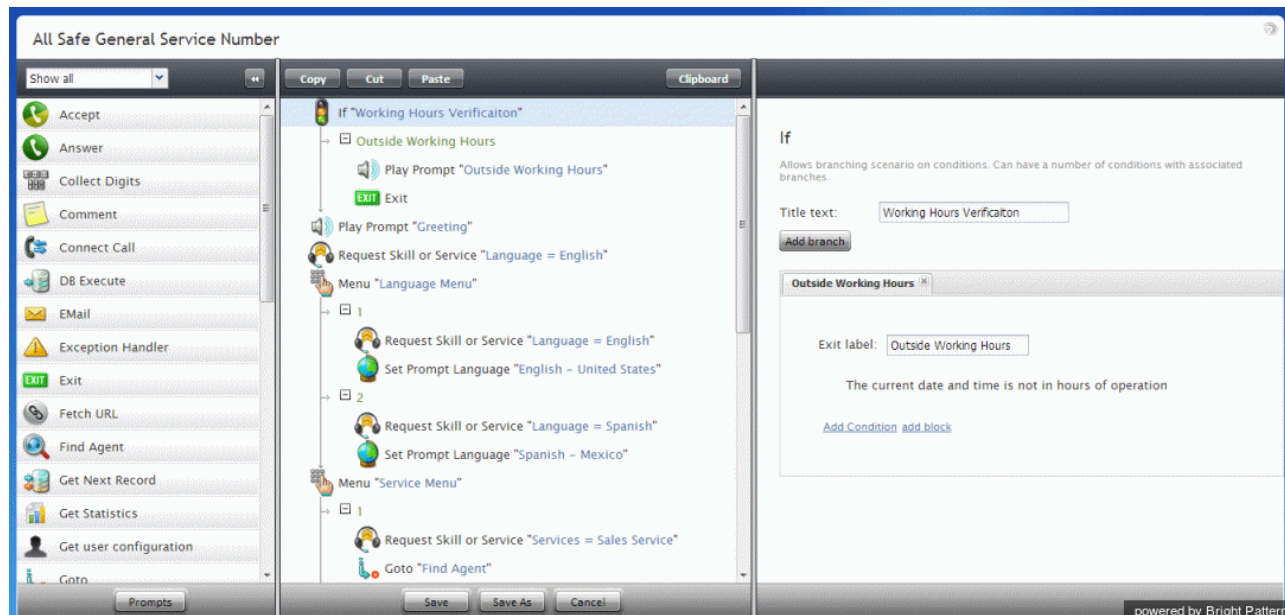
The subsequent sections of this guide describe specific scenario blocks, their attributes, and usage. The blocks are listed in alphabetical order.

1. REDIRECT [5.3:Scenario-builder-reference-guide/ScenarioBlocks/Menu](#)
1. REDIRECT [5.3:Scenario-builder-reference-guide/ScenarioBlocks/SetVariable](#)
1. REDIRECT [5.3:Scenario-builder-reference-guide/ScenarioBlocks/CollectDigits](#)
1. REDIRECT [5.3:Scenario-builder-reference-guide/ScenarioBlocks/SaveSurveyResponse](#)
1. REDIRECT [5.3:Scenario-builder-reference-guide/ScenarioBlocks/StartAnotherScenario](#)

Scenario Builder Overview

For every customer interaction that enters your contact center, Bright Pattern Contact Center software has to process that specific interaction to determine what to do with it (e.g., what prompts or announcements to apply, what resources to queue for, what music to play, or when to over-flow to alternate resources). The logic of such automated interaction processing is defined in a *scenario*. Execution of a scenario with respect to a specific interaction is triggered by a particular event, such as the arrival of a call at a specific access number, or the initiation of a chat session from a specific web page.

Scenarios are designed and edited in the Scenario Builder application. This application is launched from the Contact Center Administrator application when you add a new scenario or select an existing one for editing. For more information, see section [Scenarios Overview](#) of the Bright Pattern *Contact Center Administrator Guide*.



Scenario Builder

Scenario Engine

The Scenario Engine is the component of Bright Pattern Contact Center software that executes your scenarios. Starting from version 5.0, should scenario failover occur (i.e., the Scenario Engine fails while processing a [Voice](#) scenario), the scenario will be transferred to a backup Scenario Engine; this will restart the scenario from the last executed block and prevent active, connected calls from being disconnected.

The following are some examples of what can occur at various stages of scenario failover:

- If scenario was on [Interactive Voice Response \(IVR\)](#) stage, the current IVR block will run again. For example, if a scenario is on the [Collect Digits](#) block, all entered digits will be lost and the greeting prompt will be played again. If the same scenario has a second call leg (is on the [Connect Call](#) block), the second leg is immediately disconnected and the Connect Call block again starts to dial to the destination.
- If a scenario failover occurs, calls waiting in the queue (i.e., the [Find Agent](#) block) will be immediately queued again by new Scenario Engine using the skill requirements collected by original scenario.
- Pending scenario blocks (i.e., ringing, dialing, transfers in progress) may be lost.

Note: Real-time statistics are incrementally affected by scenario failovers in some instances. For example, for [queued calls](#), one inbound call will increase statistic value by two (e.g., the first time when it was queued by original Scenario Engine, the second time when it was switched over to new Scenario Engine).

Graphical User Interface

Scenario Builder incorporates a graphical user interface (GUI) with which you can visually connect a sequence of functional blocks, thus building your scenario. These blocks are known as *scenario blocks*. Scenarios are created using a flowchart format that represents the sequence of interaction processing steps in the scenario. Different scenario blocks perform different functions, such as playing prompts, collecting digits, or looking for available agents.

To add a block to the scenario, select it from the list on the left and drag it to the desired location within the scenario. To remove a block from a scenario, select the block within the scenario and drag it back to the list of blocks on the left.

Scenario Blocks

Each block has its own configuration attributes, which appear in the edit pane on the right when the block is added to the flowchart or selected within the flowchart. The attributes specify the function represented by the block. For example, the *Play Prompt* block has an attribute that specifies which prompt shall be played when this block is executed in a specific processing step of a specific scenario. The scenario blocks described in this guide may have configuration attributes related to conditional exits, prompts, and/or settings.

Conditional Exits

The scenario typically processes blocks sequentially; however, some blocks have multiple paths that the scenario can take after processing the block. These paths are called conditional exits. Conditional exits enable you to determine how the voice scenario responds to certain conditions that may occur during the processing of an interaction, such as an agent not responding to a call. Each conditional exit appears in the flowchart as green text beneath the block to which it applies. A conditional exit may contain a flow of blocks to handle specific situations.

Prompts

Many blocks use voice prompts to request input from callers, inform callers about events, or play music while callers are waiting for an agent. These prompts can be either prerecorded audio files or static prompts that the system generates using Text-to-Speech (TTS) functionality from textual prompt descriptions. The Prompt Manager dialog box in Scenario Builder lists all prompts the open voice scenario uses, and it lets you set the languages in which the voice scenario can play prompts.

Settings

Settings, also known as configuration attributes, for this block appear in the edit pane on the right when the block is added to the flowchart or selected within the flowchart. These settings specify the function represented by the block.

The subsequent sections of this guide describe specific scenario blocks, their attributes, and usage. The blocks are listed in alphabetical order.

1. REDIRECT [5.3:Scenario-builder-reference-guide/ScenarioBlocks/PlayPrompt](#)

1. REDIRECT [5.3:Scenario-builder-reference-guide/ScenarioBlocks/Menu](#)

1. REDIRECT [5.3:Scenario-builder-reference-guide/ScenarioBlocks/Menu](#)

1. REDIRECT [5.3:Scenario-builder-reference-guide/ScenarioBlocks/Menu](#)

1. REDIRECT [5.3:Scenario-builder-reference-guide/ScenarioBlocks/SetVariable](#)

1. REDIRECT [5.3:Scenario-builder-reference-guide/ScenarioBlocks/Goto](#)

1. REDIRECT [5.3:Scenario-builder-reference-guide/ScenarioBlocks/CollectDigits](#)

1. REDIRECT [5.3:Scenario-builder-reference-guide/ScenarioBlocks/CollectDigits](#)

1. REDIRECT [5.3:Scenario-builder-reference-guide/ScenarioBlocks/CollectDigits](#)

1. REDIRECT [5.3:Scenario-builder-reference-guide/ScenarioBlocks/SaveSurveyResponse](#)

1. REDIRECT [5.3:Scenario-builder-reference-guide/ScenarioBlocks/Menu](#)

1. REDIRECT [5.3:Scenario-builder-reference-guide/ScenarioBlocks/SaveSurveyResponse](#)

1. REDIRECT [5.3:Scenario-builder-reference-guide/ScenarioBlocks/SaveSurveyResponse](#)

1. REDIRECT <5.3:Scenario-builder-reference-guide/ScenarioBlocks/SaveSurveyResponse>
1. REDIRECT <5.3:Scenario-builder-reference-guide/ScenarioBlocks/SaveSurveyResponse>

1. REDIRECT <5.3:Scenario-builder-reference-guide/ScenarioBlocks/PlayPrompt>

1. REDIRECT <5.3:Scenario-builder-reference-guide/Exercises/ScenarioBuilderBasics>
1. REDIRECT <5.3:Scenario-builder-reference-guide/Exercises/HowtoCreateaBasicScenario>
1. REDIRECT <5.3:Scenario-builder-reference-guide/Exercises/HowtoCreateaVoiceScenarioThatDistributesSurveystoaPercentageofRandomCustomers>